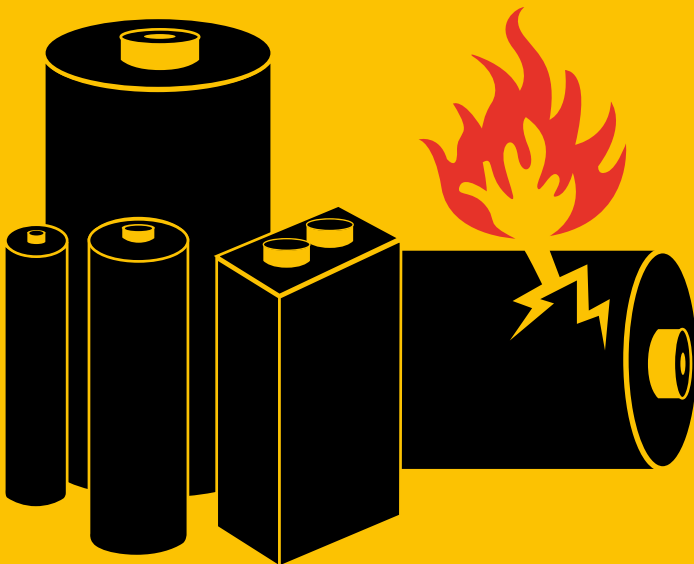




**West Sussex
Fire & Rescue
Service**

Lithium-ion batteries

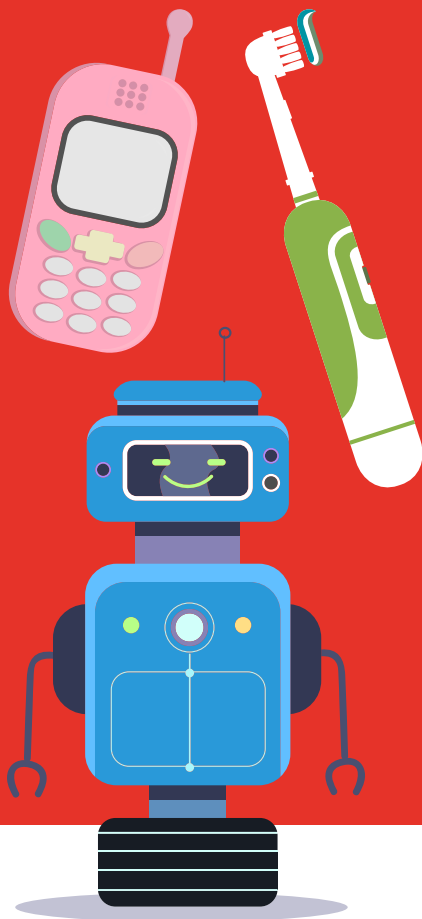
Be aware of the risks



Lithium-ion batteries are found in many items that you use on a daily basis.

They are used to power some electronic toys, smartphones, laptops and e-scooters, but are also found in other everyday items such as e-cigarettes, toothbrushes and even vehicles.

These batteries store a large amount of energy in a small amount of space. If batteries are not used correctly, they can overheat, start an intense fire that develops quickly, and even explode.



Safety advice

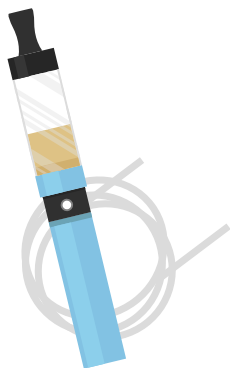
- Only buy devices from reputable retailers and that are British Standard/CE tested and approved.
- Always follow the manufacturer's instructions.
- Do not use the battery in any device that it is not designed for.
- Always fit batteries in the device the correct way.
- Only use the charger that came with the device.
- Do not charge a device under your pillow, on your bed or on a sofa or any soft furnishings that may be combustible.
- Make sure batteries are kept at room temperature and out of direct sunlight and store away from anything that can catch fire.

Signs of a problem

You need to stop using the device/battery if:

- the device gives off a burning odour or heat; or
- there is any change in colour or leaking of contents.

Move the device away from anything combustible and call 999 ask for the Fire and Rescue Service.

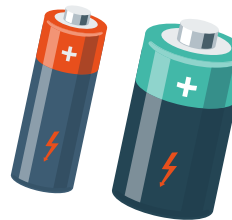


Disposal of batteries

Dispose of lithium-ion batteries safely as per the manufacturer's instructions – do not put in your household waste bin.

Batteries can be damaged from crushing during the sorting and collection of household waste, causing other waste such as paper and plastics to catch alight.

Batteries should be taken to recycling points at retail outlets, or your local household waste recycling centre.



Visit [recyclenow.com/local-recycling](https://www.recyclenow.com/local-recycling) to find your nearest centre.

E-scooters

E-scooters are not legal on pavements or roads in West Sussex, and can only be used on private property with the owner's permission. They are powered by lithium ion batteries, and there have been a number of cases of fires breaking out when not charged properly.

Do not charge E-bikes and E-scooters on escape routes or in communal areas of a multi occupied buildings. Only charge these vehicles in an out building or appropriate charging facility.

If a fire does develop evacuate the property and call 999 for the fire and rescue service. Further guidance can be found at: nationalfirechiefs.org.uk/E-bikes-and-e-scooters-fire-safety-guidance



